

MATERIALS AND FINISHES:

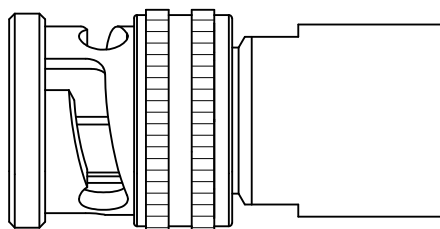
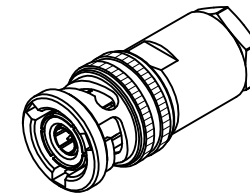
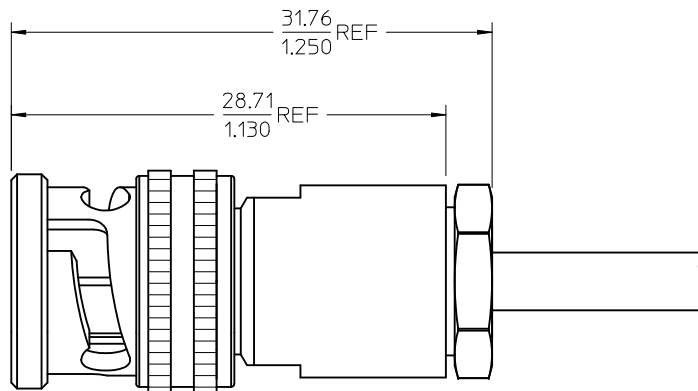
BODY, CLAMP BODY, CLAMP, NUT, C'NUT, WASHER: BRASS  
PLATED: NICKEL

CENTER/INTERMEDIATE CONTACT: BRASS  
PLATED: GOLD

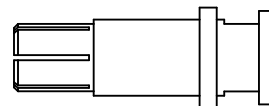
INSULATOR: TEFLON

SPRING WASHER: BeCu  
PLATED: NICKEL

GASKET: SILICONE RUBBER



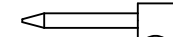
FRONT BODY



INTERMEDIATE CONTACT



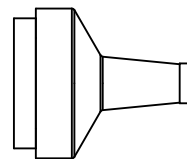
FRONT INSULATOR



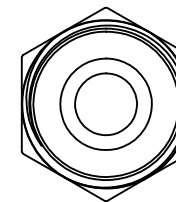
CONTACT



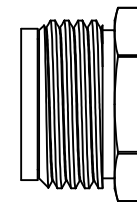
REAR INSULATOR



CLAMP BODY/INS



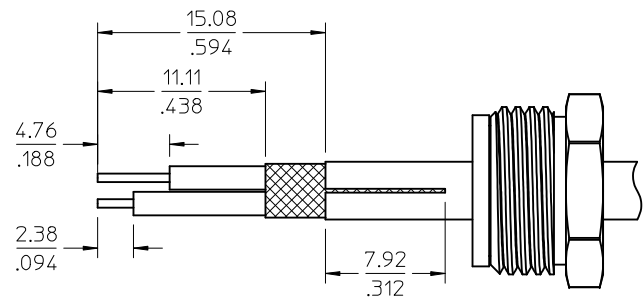
CLAMP/NUT



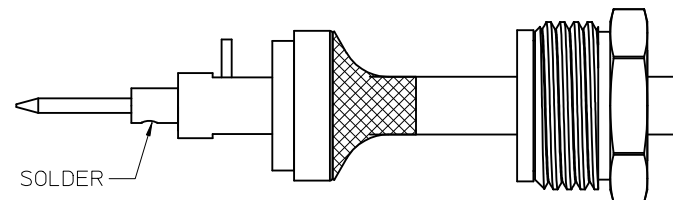
MIL-STD-348A, FIG. 201-1	INTERFACE
SPECIFICATION	DESCRIPTION

73175-0021	73175-0020, ONE PER BAG
73175-0020	BULK
PART NO.	PACKAGING

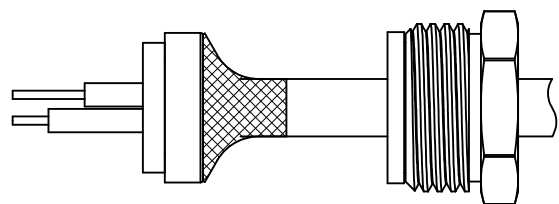
CHG: ADDED ASSY INSTRUCTIONS AND SHEET 2 EC NO: URF2012-0430 DRW:SSHAH 2012/01/18 CHKD:JLEE 2012/01/19 APPR:JWIENER 2012/01/19 A1	QUALITY SYMBOLS ▽=0 ▽=0	GENERAL TOLERANCES (UNLESS SPECIFIED)		DIMENSION STYLE MM/IN		SCALE	DESIGN UNITS METRIC	THIRD ANGLE PROJECTION															
		<table border="1"> <tr> <th></th> <th>mm</th> <th>INCH</th> </tr> <tr> <td>4 PLACES</td> <td>± .005</td> <td>± .0005</td> </tr> <tr> <td>3 PLACES</td> <td>± .005</td> <td>± .0005</td> </tr> <tr> <td>2 PLACES</td> <td>± .005</td> <td>± .0005</td> </tr> <tr> <td>1 PLACE</td> <td>± .005</td> <td>± .0005</td> </tr> </table>			mm	INCH	4 PLACES	± .005	± .0005	3 PLACES	± .005	± .0005	2 PLACES	± .005	± .0005	1 PLACE	± .005	± .0005	DRAWN BY DATE SSS 2003/12/19		TITLE	TRIAX PLUG STR 3 LUG TWC-78-1 TWINAX CABLE TRIAX-PC	
			mm	INCH																			
		4 PLACES	± .005	± .0005																			
3 PLACES	± .005	± .0005																					
2 PLACES	± .005	± .0005																					
1 PLACE	± .005	± .0005																					
DRAFT WHERE APPLICABLE MUST REMAIN WITHIN DIMENSIONS		CHECKED BY DATE TEF 2003/12/19		APPROVED BY DATE GMH 2003/12/17		MOLEX INCORPORATED																	
		MATERIAL NO. SEE TABLE		DOCUMENT NO. SD-73175-002		SHEET NO. 1 OF 2																	



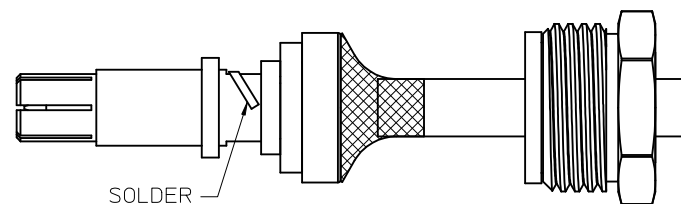
1. SLIDE CLAMP NUT ASSEMBLY ON CABLE. STRIP/SPLIT CABLE TO DIMENSION SHOWN. SLIGHTLY TIN CONDUCTORS



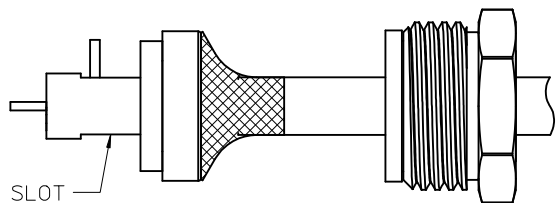
4. SLIDE CONTACT OVER CENTER CONDUCTOR AND SEAT AGAINST REAR INSULATOR. SOLDER CONTACT IN PLACE



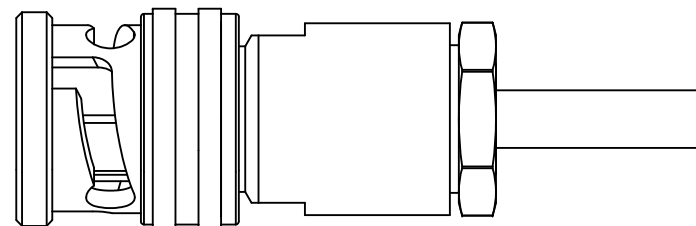
2. FLARE BRAID AND PUSH CLAMP BODY/INS ASSEMBLY UNDER BRAID UNTIL BRAID IS FLUSH WITH EDGE OF CONE



5. SLIDE FRONT INSULATOR OVER CONTACT. SLIDE INTERMEDIATE CONTACT OVER FRONT INSULATOR UNTIL BOTTOMS. WRAP BENT CONDUCTOR OVER INTERMEDIATE CONTACT AND SOLDER



3. BEND LONGER STRIPPED CONDUCTOR AT ANGLE OF 90° AND POSITION OTHER CONDUCTOR AT CENTER OF CABLE. SLIDE REAR INSULATOR WITH SHORTER CONDUCTOR SLIDING IN HOLE AND BENT CONDUCTOR SLIDING THROUGH SLOT



6. SLIDE CLAMP NUT ASSEMBLY FORWARD ONTO TAPERED BRAID. INSERT ASSEMBLY INTO FRONT BODY AND TIGHTEN NUT. TORQUE TO 2.82-3.95 N-m(25-35 IN-LB)

CHG: SEE SHEET 1	2012/01/18
EC NO: URF2012-0430	2012/01/19
DRW:SSHAH	2012/01/19
CHKD:JLEE	2012/01/19
APPR:JWIENER	2012/01/19
REV	DESCRIPTION
A1	

QUALITY SYMBOLS
▽=0
▽=0

GENERAL TOLERANCES (UNLESS SPECIFIED)
4 PLACES ± --- ± ---
3 PLACES ± --- ± ---
2 PLACES ± --- ± ---
1 PLACE ± --- ± ---
ANGULAR ± 2 °
DRAFT WHERE APPLICABLE MUST REMAIN WITHIN DIMENSIONS

DIMENSION STYLE	MM/IN
DRAWN BY	DATE
SSS	2003/12/19
CHECKED BY	DATE
TEF	2003/12/19
APPROVED BY	DATE
GMH	2003/12/17
MATERIAL NO.	SEE SHEET 1

SCALE	DESIGN UNITS	THIRD ANGLE PROJECTION
	METRIC	
TITLE		
TRIAx PLUG STR 3 LUG		
TWC-78-1 TWINAX CABLE		
TRIAx-PC		
MOLEX INCORPORATED		
DOCUMENT NO.	SHEET NO.	
SD-73175-002	2 OF 2	
THIS DRAWING CONTAINS INFORMATION THAT IS PROPRIETARY TO MOLEX INCORPORATED AND SHOULD NOT BE USED WITHOUT WRITTEN PERMISSION		